



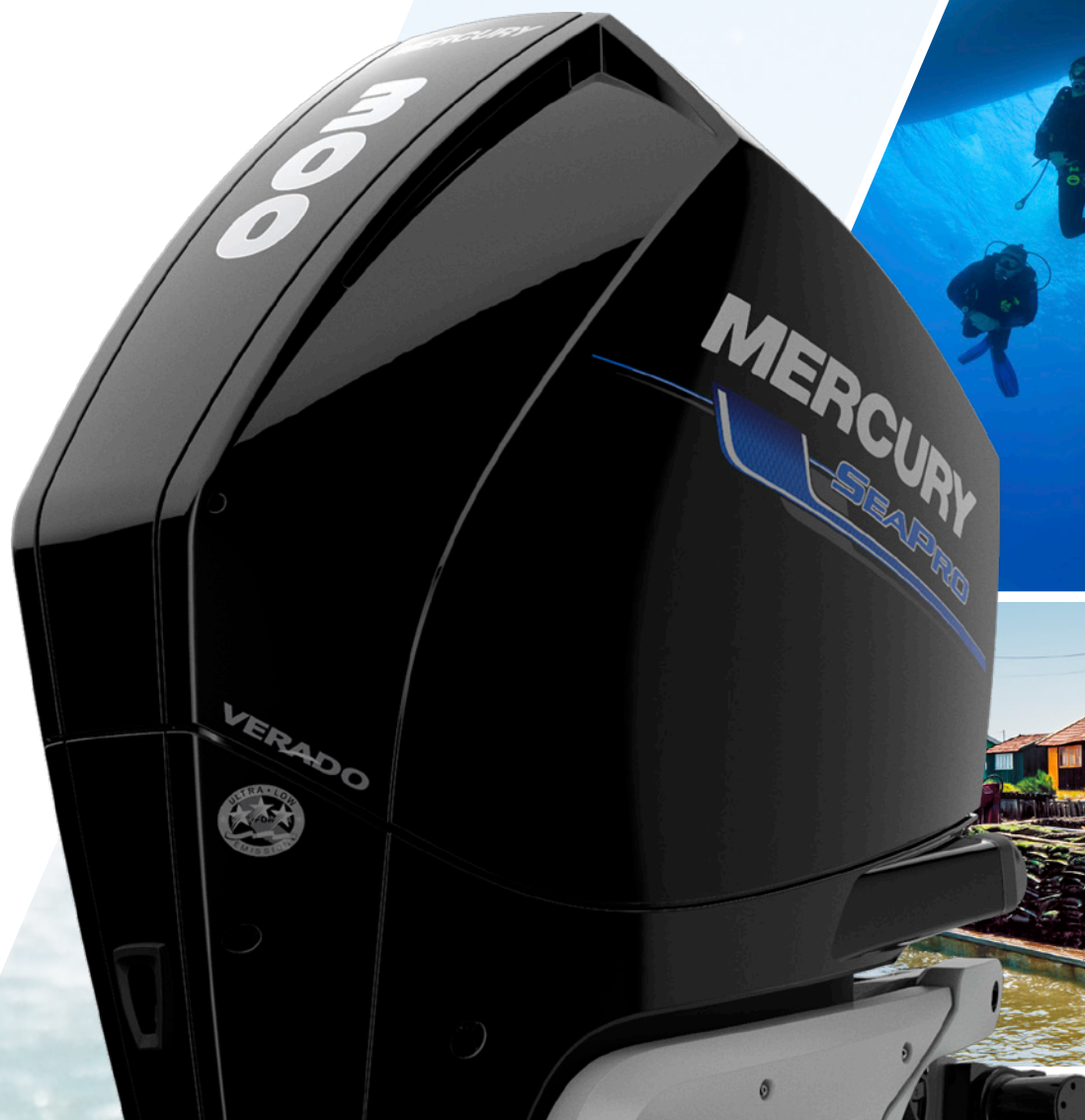
***Commercial
Outboard Range***

Reliable, durable and hard-working

At Mercury Marine, water is our life. It's why we do what we do: engineer, build and provide the best marine power in the world. Since 1939, our passion for quality, ultimate reliability, performance, intuitive design, pro-active support and value is matched only by our customers' passion and demands.

Mercury provides engines, services and parts for recreational, commercial and government marine applications.

Whether our customers make their living on the water, keeping our waters safe, or simply by living for it, they can rely on our broad range of hard-working marine products.





When you've got a job to do on the water, call in a Pro

Mercury SeaPro commercial outboards are designed to work as hard as you do...engineered to be ultra-resilient working partners for everyone making their living on the water. They've earned their credentials for reliability by performing under the toughest working conditions possible to deliver trouble-free operation year after year.

Every SeaPro outboard features unique components to cope with the additional demands of professional operation.

On selected models, Big Tiller comes as standard. The Big Tiller handle gives commercial operators just what they want – more room in the boat and easy hands-on control of their engine with integrated shift, trim and throttle controls.

Whatever your job, there's a specific Mercury SeaPro model to suit it.

Mercury SeaPro – Consider the job done.

Mercury ultimate reliability

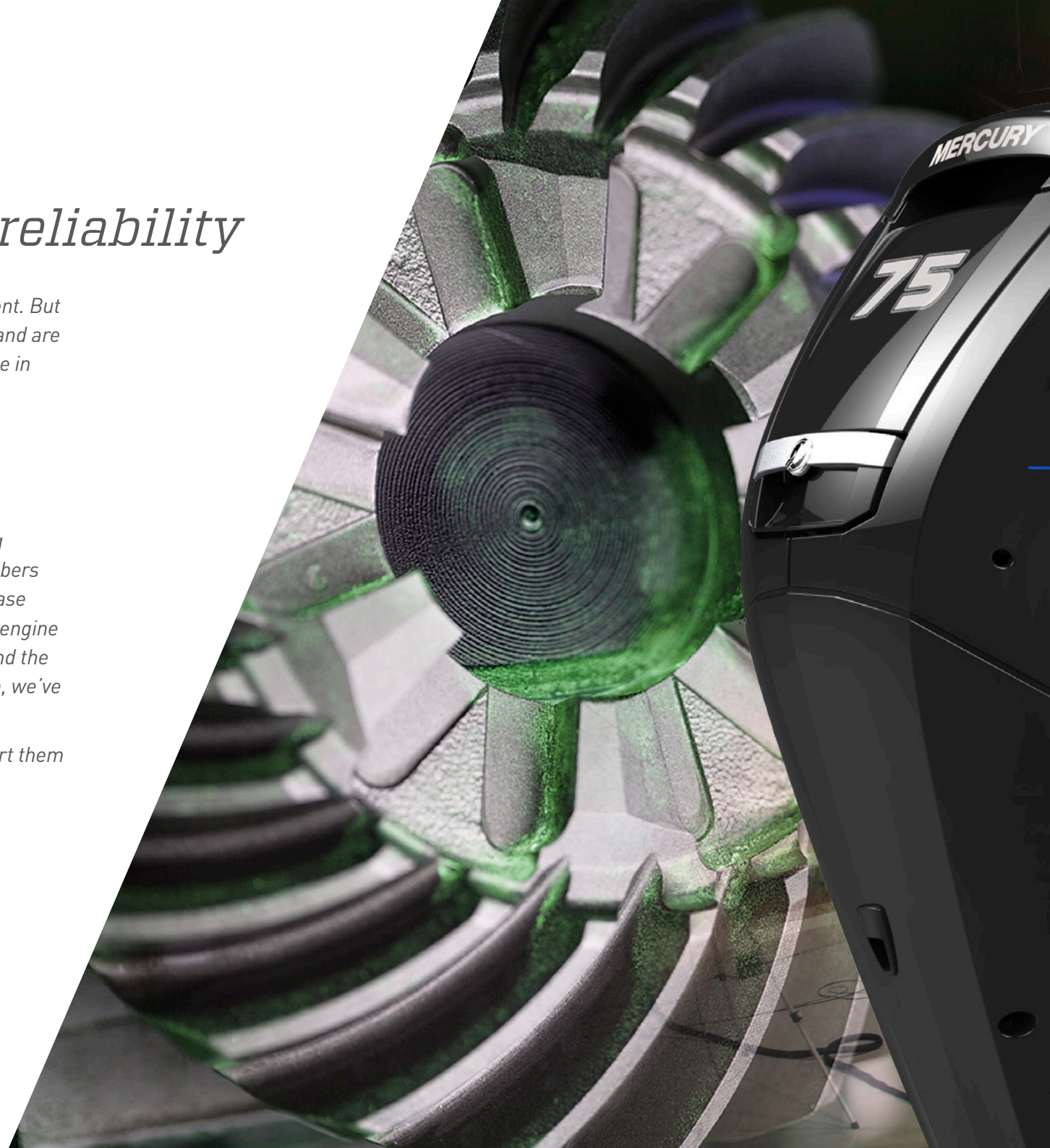
Boating is not often thought of as a harsh environment. But just stop and think about it. Marine engines can be, and are often used for extended periods at wide-open throttle in harsh saltwater and full UV sunlight.

At Mercury, we test our engines rigorously and use those results to make them even more reliable.

The tougher the test, the tougher the engine.

We put our engines through tests such as vicious log strikes, saltwater spray booths, high-humidity chambers and hot and cold water temperatures. That's just phase one of our brutal testing process. Then we run each engine rigorously for thousands of hours to prove it can stand the test of time. So whatever you put the engine through, we've already done it.

We not only test our engines meticulously, we support them with leading corrosion protection and warranties.



A black Mercury SeaPro outboard motor is shown in the foreground on the left. The background is an anechoic chamber with brown pyramidal sound absorbers. A white crash test dummy is visible in the background on the right. A semi-transparent white triangle contains text.

MERCURY
SEAPRO

80 years of Mercury innovation

Since 1939, Mercury has led the way in innovation with leading-edge technology and efficiency. Mercury SeaPro outboards continue the proud tradition of creating engines that continue to break the mould – the most refined engines money can buy for any commercial application.

SEAPRO FOURSTROKE



FOURSTROKE



Read Owners Manual

Mercury FourStrokes: a game-changer

The compact Mercury SeaPro FourStrokes are even tougher. They're quiet, delivering power, durability and fuel efficiency. All this means less time out of the water and more time on the job. The strong, silent type that just gets on with it.

Commercial calibration

SeaPro engines are specifically calibrated to achieve a much longer engine life, ensuring reliability and performance when you need it most.

Fuel-efficient Fours

Most four-stroke engines have up to 30 % better fuel efficiency than two-strokes, allowing you to go further on less fuel.

Warranty

SeaPros are engineered for the long term, with the warranty coverage to prove it. Your investment is well protected. Your warranty will only be as good as the business that holds it. Rest assured, with a vast network of sales and service dealers worldwide, Mercury Marine will always be here to help you with whatever it is you need.

Corrosion resistance

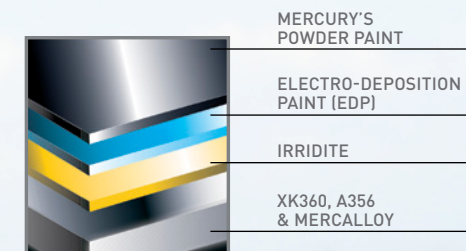
Mercury's proprietary formula, XK360, is an extremely low-copper-content aluminium alloy, which leads the industry in corrosion resistance. This makes costly corrosion failures and high labour bills a thing of the past.

Lightweight

Lightweight, durable materials and fewer moving parts than competitive FourStroke engines have made the SeaPro tough, compact, durable and highly efficient. An overall reduction in weight lets you take full advantage of the engine's torque for acceleration.

Repower with SeaPro

The compact size also means older boats not initially designed for the weight of heavier four-strokes can now be repowered and re-created to perform at their best with the latest technology.





SeaPro 200-300 hp FourStroke

The impressive muscle of our new V-8 4.6-liter and V-6 3.4-liter powerheads is specifically designed for commercial duty and delivers our best-ever fuel economy.

High Output

V-8 CMS models feature a high-output alternator that delivers 20 amps net at idle and 85 peak amps, while the V-8 300 hp SeaPro AMS (Advanced MidSection) engine boasts a class-leading 115-amp alternator.

Idle Charge battery-management

When battery voltage decreases, the engine will automatically increase idle rpm to boost alternator output and recharge low batteries to the proper level, protecting operators from draining their battery while trolling.

Heavy-Duty Gearcase

The new SeaPro also features a heavy-duty gearcase validated at three times the lifespan of a recreational gearcase.

Convenient gearcase oil drain: Oil can be easily drained from the gearcase torpedo.

High displacement

The new V-8 4.6 L 225-300 hp SeaPro engines boast class-leading displacement, while the new 200 hp SeaPro features a brawny V-6 3.4 L powerhead with plenty of muscle to get the job done. And each Conventional MidSection (CMS) 200-300 hp model is the lightest engine in its class. All V-8 and V-6 SeaPro engines are extremely compact and light yet deliver ample torque that makes these outboards ideal power for heavily loaded boats.

- ▶ Engineered for maximum durability, reliability and longevity
- ▶ High-displacement V-8 4.6 L and V-6 3.4 L powerheads deliver loads of torque at a lower rpm with less stress on the engine
- ▶ Exceptionally lightweight design and Advanced Range Optimization maximize fuel economy at cruise
- ▶ Easy and intuitive to maintain
- ▶ Compatible with mechanical or digital controls, hydraulic or power steering, and Mercury's Big Tiller
- ▶ Industry-exclusive battery-management capability and class-leading charging output
- ▶ Commercial warranty to match rigors of high-hour, commercial operation
- ▶ A Top Cowl Service Door, an industry-exclusive, simplifies routine maintenance with easy oil checks and oil fills without removing the cowl.
- ▶ With Adaptive Speed Control the Mercury FourStroke maintains a desired rpm regardless of changes in load or condition (such as rough conditions, tight turns, tow sports and lower speeds on plane) without needing frequent adjustments to the throttle lever position – a first for the outboard industry.
- ▶ Advanced Range Optimization (ARO) calibration utilizes closed-loop fuel control to precisely adjust the fuel mixture and deliver the best possible efficiency. Patented closed-loop fuel control uses a wide-range oxygen sensor to optimize air-to-fuel ratio during all operating conditions, an advantage over most competitive engines that employ narrow-range sensors that only provide feedback over a limited operating range.





SeaPro 150 hp FourStroke

The SeaPro 150 hp FourStroke is one tough customer, built to develop torque loads at a stress level that will ensure higher durability than any other 150 horsepower outboard.

Stiffer upper mounts

New upper mounts are designed to produce less noise and vibration. On the SeaPro range they're also twice as stiff as the recreational models in order to maximise durability. Their longevity makes them ideally suited to the demands and rigours of commercial applications.

High displacement

Higher displacement equals more torque. The SeaPro 150hp FourStroke has plenty of it, which lets it churn out power without breaking out in a sweat. Greater horsepower and lower weight equals better acceleration, providing better handling and control.

Easy oil drainage and fill

The gear-case oil is drained through the torpedo, which means the engine doesn't have to come out of the water – it's simply tilted forward.

Easy to gauge

Accurate digital information is presented in a clean, easy-to-read gauge for instant, reliable information at a glance. Combined with additional sensors, Mercury's digital gauges are powerful tools, providing safety and comfort while on the water.

- ▶ Higher displacement means less work for the engine in producing torque and horsepower. And more torque and horsepower give the Mercury SeaPro 150 hp FourStroke torque rivalling the strongest two-strokes.
- ▶ The SeaPro 150 hp FourStroke weighs just 206 kgs and has almost 20% fewer parts than its competitors. A smaller compact design and its lighter weight reduces the overall package weight of the boat which, depending on the hull, will improve performance and efficiency.
- ▶ Depth and smallest tilt-arc with the least well intrusion whilst providing better hull manoeuvrability, fuel efficiency and acceleration.
- ▶ Fewer moving parts for less friction and greater reliability; quiet operation making conversation easy.
- ▶ More stainless steel for longevity.
- ▶ Sacrificial aluminium anodes and extensive use of stainless steel increases corrosion protection.
- ▶ Best-in-class battery “on-demand” charging system to ensure optimum power to all your electronic accessories.
- ▶ Exclusive oil cooler and sump maintains correct oil temperature, enhances performance and extends the life of the engine.
- ▶ Focused mount system and optimum mount design reduce overall vibration while improving durability for comfort and long-term performance.
- ▶ SeaPro 150 FourStrokes are available with Mercury’s Big Tiller. The Big Tiller handle gives commercial operators just what they want – more room in the boat and easy hands-on control of their engine with integrated shift, trim and throttle controls.





SeaPro 75-115hp FourStroke

Embracing all the innovation that made our 150 legendary, the SeaPro FourStroke Mid-Range takes it to the next level – unbridled power, unusually compact design, uncompromising reliability, unbelievably fuel-efficient. The most efficient mid-range, working FourStrokes ever!

Leading gear-case technology

All 75-115hp SeaPro FourStrokes utilise the Command Thrust gear-case. This heavy-duty gear-case allows users to run an oversized prop, sits deeper in the water and incorporates a different gear case ratio – all designed to improve handling and more easily lift heavier boats.

Stiffer upper mounts

New upper mounts are designed to produce less noise and vibration. On the SeaPro range they're also stiffer to maximise durability. Their longevity makes them ideally suited to the demands and rigours of commercial applications.

Easy oil drainage and fill

All 75-115hp SeaPro FourStroke engines include a gear-case oil drain and fill located in the torpedo, which means the engine doesn't have to come out of the water – it's simply tilted forward. Mercury SeaPro FourStrokes offer regular, easy, do-it-yourself maintenance to keep you on the water longer.

Easy to gauge

Accurate digital information is presented in a clean, easy-to-read gauge for instant, reliable information at a glance. Combined with additional sensors, Mercury's digital gauges are powerful tools, providing safety and comfort while on the water.

- ▶ FourStroke technology provides maximum fuel economy, smoothness and uncompromising reliability.
- ▶ At 2.1 litres, the all-new Mercury SeaPro 75-115hp range has one of the largest displacements in its class. Our 115hp is the lightest in its class – it has a similar weight to the 75-90hp, but it offers over 30% more displacement for 'out-of-the-hole' performance and torque loads to help get the boat on plane while delivering quicker acceleration.
- ▶ Improved engineering technology has packed incredible power into a light, compact outboard, improving power-to-weight ratio and reducing the overall package weight of the boat.
- ▶ Fewer moving parts for less friction and greater reliability.

- ▶ Smooth and quiet operation featuring a new, quiet trim pump system, a refined clutch system, sound-absorbent cowl design and a closed-cell acoustic lining in the driveshaft housing chaps – all making conversation easier.
- ▶ Uncompromising reliability and built to last, from tough and durable components with over 17,000 hours of total testing time.
- ▶ More stainless steel for longevity.
- ▶ Sacrificial aluminium anodes and extensive use of stainless steel increases corrosion protection.
- ▶ Sealed electrical connections are designed and validated to remain leak-proof.
- ▶ The 75-115hp, SeaPro FourStroke line-up also includes:
 - Accurate digital information presented in a clean, easy-to-read SC1000 System Tach gauge for instant, reliable information at a glance.
 - A water-separating fuel filter, helping to eliminate fuel concerns that exist in some commercial regions around the world.
 - 75-115hp SeaPro FourStrokes are available with Mercury's Big Tiller. The Big Tiller handle gives commercial operators just what they want – more room in the boat and easy hands-on control of their engine with integrated shift, trim and throttle controls.





SeaPro 40-60hp FourStroke.

Continuing the legacy of the Mercury SeaPro FourStroke line of outboards, the 60 and 40hp engines offer increased durability and easy maintenance for commercial use. These models have enhanced features that are engineered for high-hour applications and built to withstand the harshest saltwater environments.

Anodized driveshaft housing

60 and 40hp SeaPro FourStroke engines come standard with an anodized driveshaft housing – decreasing the opportunity for corrosion throughout a vital section of your engine.

Engineered for Commercial

Engineered to deliver longer engine life while maintaining the power and performance necessary to get the job done, the 60 and 40hp SeaPro FourStroke engines are validated to three times the engine life of a recreational engine.

Stainless Steel Thermostat

A stainless steel thermostat comes standard on the 60 and 40hp SeaPro FourStroke engines – improving performance and life in harsh saltwater environments.

Easy maintenance

A pictorial maintenance decal and owner's manual supplement for the 60 and 40hp SeaPro FourStroke engines makes simple service and maintenance even easier by providing step-by-step instructions.

- ▶ The 60 and 40 hp SeaPro FourStroke engines offer robust upper mounts to increase durability in commercial applications.
- ▶ The gearcase oil is drained through the torpedo, which means gearcase oil can be changed in or out of the water - simply tilt the engine up.
- ▶ The 60 and 40 hp SeaPro FourStroke engines come standard with an extended life fuel pump – improving the durability of the engine and ensuring the engine is ready to run when you need it.
- ▶ The new 60 and 40 hp SeaPro FourStroke engines have been upgraded to be fully SmartCraft capable. This allows the user to utilize the complete Mercury suite of SmartCraft gauges, keeping a better eye on their engine to make sure it is running right for the long haul.

- ▶ Accurate digital information is presented in a clean, easy-to-read gauge for instant, reliable information at a glance. Combined with additional sensors, Mercury digital gauges are powerful tools, providing safety and peace of mind while on the water.
- ▶ 60 and 40 hp SeaPro FourStrokes are available with the Mercury Big Tiller. The Big Tiller gives commercial operators just what they want – a longer, more durable tiller handle with integrated shift, trim, and throttle that is easy to reach and use.
- ▶ Mercury 60 and 40 hp SeaPro FourStroke engines offer an improved gas assist trim cylinder, increasing durability in commercial markets.
- ▶ The 60 and 40 hp SeaPro FourStroke engines come standard with the Command Thrust gearcase. This heavy-duty gearcase allows users to run a larger propeller, sits deeper in the water and incorporates a 2.33:1 gear ratio – all designed to improve handling and lift larger, heavier boats.
- ▶ 18-amp alternator provides superior battery charging capability.





SeaPro 15hp FourStroke

The rugged new 15hp SeaPro is designed and built to take on big jobs in smaller boats. It's engineered to be durable and is designed for extended life of the engine. For commercial fishing vessels and commercial workboats.

Less weight, more torque

A new low-friction, single-overhead cam powerhead delivers greater torque. More power and less weight improve on-plane performance and top speed. These are the quickest, fastest and strongest outboards in the category!

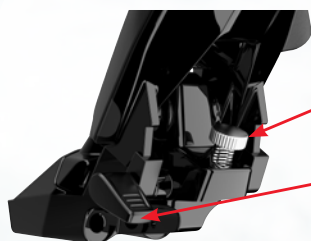
Ambidextrous tiller

The new centre-mounted tiller provides simple horizontal adjustment and reversible throttle grip rotation for port or starboard installation. Vertical down-stop is also adjustable, so you can dial in this tiller to fit the boat and the operator's reach and preference. The large shift lever is located forward on the tiller for easy operation, and a new knob on the tiller adjusts throttle friction

Easy, reliable starting

The FourStrokes' Electronic Fuel Injection (EFI) system doesn't require a battery for rope-pull starting. EFI also produces easy starts – hot or cold – and outstanding fuel efficiency. It self-adjusts to deliver peak performance according to weather and elevation. And most maintenance issues related to modern fuels are eliminated by the pressurized fuel system. Throttle response is always crisp

- ▶ Innovative adjustable tiller handle is designed for comfortable left- or right-hand operation.
- ▶ Electronic Fuel Injection (EFI) delivers quick starts and crisp throttle response.
- ▶ New twin-cylinder powerhead produces outstanding torque for great acceleration.
- ▶ Lightweight design offers enhanced portability and improved performance.
- ▶ New engine mounts keep vibration off the boat and tiller handle.
- ▶ Maintenance is made easy with no-drip oil changes.
- ▶ Ready for a wide range of applications control, and up to three shaft-length options.



The adjustable vertical down stop sets the tiller at a comfortable operating position.

The tiller vertical angle locks at 73 degrees to create more boat space for the driver.

The Ultimate Commercial Engine Package

► Everything Packaged in 1 box

- › Water separating fuel filter, SC1000 SystemTach on all models and Big Tiller on select models.



SC1000 SystemTach



Big Tiller



Water separating fuel filter

► Owner's Manual supplement

- › Pictorial step by step instructions for routine maintenance, part numbers and fault codes.



► Fault Code Strategy

- › Numeric fault codes displayed on the SC1000 SystemTach alerts the operator of engine issues and can be referenced on the pictorial supplement, without having to worry about language translations.



Mercury Controls & Rigging



Mercury VesselView®

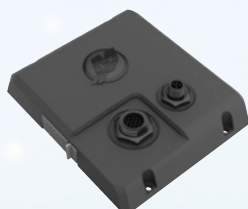
Mercury® VesselView® allows you to display engine information, genset, sounder, and much more. It has more information and data on boat and engine functions than any other system in the boating industry: rpm, speed, fuel flow and efficiency, temperature, trim, and more. You can monitor up to four engines at a time on an intuitive, “at a glance” LCD screen.

Mercury VesselView screens (903/703/502/403) integrate an Active Trim interface so that the Active Trim dash pash is not required.

VesselView® Mobile

VesselView Mobile allows you to use your mobile device (smartphone or tablet, Android or iPhone) to connect with your Mercury outboard or sterndrive engine. The plug-and-play module connects to your device via Bluetooth, providing quick, convenient access to your engine's data. One module can monitor up to four engines. You can even customize the data viewed across three screens to fit your boating style.

The product is compatible with all Mercury SmartCraft-capable engines 40 hp and above built since 2003. One module supports single through quad engine applications.



VesselView Link

Looking to fully integrate your existing multi-function display with your Mercury propulsion system? VesselView Link is the answer. Offered in single-engine or multi-engine (2 to 4 engines) versions, this is your link to all the features SmartCraft has to offer. Available on compatible Lowrance and Simrad displays, you now have all the VesselView information and control capability at your fingertips. With a user interface that's easy to navigate, you're able to integrate the following systems into one display.

NMEA 2000 Gateway

The NMEA 2000 open protocol used by a number of gauge and systems manufacturers for communication between marine electronic devices can now interact with Mercury SmartCraft devices. The gateway also allows NMEA 2000 devices, such as trim tabs, to be shown on SmartCraft gauges. The gateway benefits you by allowing you to purchase NMEA 2000-compliant devices, such as chart plotters, and show SmartCraft engine data on these devices.

Works with any SmartCraft capable engine in single, dual, triple or quad applications.



Active Trim

This intuitive, hands-free system continually adjusts engine trim based on changes in boat speed to improve performance, fuel economy, and ease of operation. It responds to boat manoeuvres and speed changes with precision and delivers a better overall driving experience. No knowledge of trimming an engine is needed to take advantage of Active Trim.

Active Trim is compatible with all current SmartCraft-capable Mercury outboards and sterndrive engines (40 hp and above).

Joystick Piloting®

Forget complex. Forget stressful positioning or manoeuvring in tight spaces during less-than-ideal situations. Focus instead on a new feeling. One of total confidence. Confidence that comes from being effortlessly, intuitively, completely in control of your boat, thanks to the Mercury's Joystick Piloting system. The power to make your boat do exactly what you want, with just a touch of your fingertips. You don't have to be a control freak to appreciate that.



Big-time comfort. Big-deal engineering.

- ▶ Mercury Marine's new Big Tiller handle gives fishermen and commercial operators just what they want – more room in the boat and easy hands-on control of their engine.
- ▶ This ergonomic Big Tiller is a joy to use with its integrated shift, trim and throttle controls.
- ▶ User-friendly adjustment knobs make it easy to modify the tiller handle angle, throttle handle and valve tension – and operating it is a breeze with the proximity of the shift arm to the throttle end of the tiller.




- ▶ Created specifically for high-horsepower Mercury outboard models, the handle can be adjusted to a large range of outboard motors.
- ▶ Options available include external trim switches and push-button RPM adjuster, thus providing better control and manoeuvrability, as well as power steering on some models.

Quicksilver oil & lubricants

- ▶ Quicksilver oils and lubricants are specifically engineered for the unique needs of marine engines and rigorously tested to meet our high standards. So you can get the most out of your engine while having total peace of mind that your engine is being protected. Exactly what you should expect from the only marine engine manufacturer 100% focused on the marine industry for over 75 years.
- ▶ The best match for your SeaPro engine is the Quicksilver Synthetic Blend 4-Stroke Outboard Oil SAE 25W-40.





Mercury propellers. The right way forward.

After your engine, your propeller is the single most important factor in how your boat performs. It affects:

- > Handling > Engine Life > Speed*
- > Acceleration > Fuel Economy > Safety*

Mercury is the world's largest propeller designer and manufacturer with over 700 propellers in our range. We have the best props for every application, from custom racing to 2.5hp portables. Mercury propellers are proven for superior strength and all-round performance.

Speak to your dealer about the right propeller for your needs or use our online propeller selector at
www.MercuryMarine.com/propellers/prop-selector

300-150 hp Fourstroke SeaPro product specifications

Specifications	300 hp AMS	300 hp	250 hp	225 hp	200 hp	150 hp
Propshaft Rated Power (hp / kW)	300/224	300/224	250/186	225/168	200/149	150/110
Max RPM at full throttle	5600	5600	5600	5600	5400	4800-5300
Cylinders/engine configuration	V-8, 32-valve dual overhead cam (DOHC)	V-8, 32-valve dual overhead cam (DOHC)	V-8, 32-valve dual overhead cam (DOHC)	V-8, 32-valve dual overhead cam (DOHC)	V-6, 24-valve dual overhead cam (DOHC)	In-Line 4, 8-valve single overhead cam (SOHC)
Displacement (litres)	4.6	4.6	4.6	4.6	3.4	3.0
Bore & Stroke (Inch. / mm)	3.6 x 3.4 / 92 x 86	3.6 x 3.4 / 92 x 86	3.6 x 3.4 / 92 x 86	3.6 x 3.4 / 92 x 86	3.6 x 3.4 / 92 x 86	4.0 x 3.6 / 102 x 92
Induction system	Performance-Tuned Long runner Intake Manifold	Performance-Tuned Long runner Intake Manifold	Performance-Tuned Long runner Intake Manifold	Performance-Tuned Long runner Intake Manifold	Performance-Tuned Long runner Intake Manifold	Performance-tuned scroll intake manifold
Fuel system	EFI ¹	EFI ¹	EFI ¹	EFI ¹	EFI ¹	EFI ¹
Fuel requirements	90 RON 10% ethanol maximum	90 RON 10% ethanol maximum	90 RON 10% ethanol maximum	90 RON 10% ethanol maximum	90 RON 10% ethanol maximum	90 RON 10% ethanol maximum
Ignition system	SmartCraft ECM digital inductive	SmartCraft ECM digital inductive	SmartCraft ECM digital inductive	SmartCraft ECM digital inductive	SmartCraft ECM digital inductive	SmartCraft ECM digital inductive
Charging system	85A (1071 Watt) with Idle Charge	85A (1071 Watt) with Idle Charge	85A (1071 Watt) with Idle Charge	85A (1071 Watt) with Idle Charge	85A (1071 Watt) with Idle Charge	60A (756 Watt) belt driven alternator
Starting	Electric (turn-key) with SmartStart	Electric (turn-key) with SmartStart	Electric (turn-key) with SmartStart	Electric (turn-key) with SmartStart	Electric (turn-key) with SmartStart	Electric (turn-key) with SmartStart
Exhaust system	Through prop	Through prop	Through prop	Through prop	Through prop	Through prop
Cooling system	Water cooled with thermostat	Water cooled with thermostat	Water cooled with thermostat	Water cooled with thermostat	Water cooled with thermostat	Water cooled with thermostat
Lubrication system	Integrated dry sump	Integrated dry sump	Integrated dry sump	Integrated dry sump	Integrated dry sump	Integrated dry sump
Oil requirement	NMMA Certified FCW SAE 25W-40 ²	NMMA Certified FCW SAE 25W-40 ²	NMMA Certified FCW SAE 25W-40 ²	NMMA Certified FCW SAE 25W-40 ²	NMMA Certified FCW SAE 25W-40 ²	NMMA Certified FCW SAE 25W-40 ²
Oil capacity (litres)	6.6	6.6	6.6	6.6	6.6	6.0
Engine management system	SmartCraft ECM	SmartCraft ECM	SmartCraft ECM	SmartCraft ECM	SmartCraft ECM	SmartCraft ECM
Engine control system	Digital Throttle & Shift DTS	Digital Throttle & Shift DTS	Digital Throttle & Shift DTS	Digital Throttle & Shift DTS	Remote Mechanical or Digital Throttle & Shift DTS	Standard Mechanical Throttle & Shift
Engine protection system	SmartCraft Engine Guardian	SmartCraft Engine Guardian	SmartCraft Engine Guardian	SmartCraft Engine Guardian	SmartCraft Engine Guardian	SmartCraft Engine Guardian
Gear shift	F-N-R	F-N-R	F-N-R	F-N-R	F-N-R	F-N-R
Gear ratio	1.75:1	1.75:1	1.75:1	1.75:1	1.85:1	1.92:1
Driveshaft lengths	20" (ELPT)	20" (ELPT)	20" (ELPT)	20" (ELPT)	20" (ELPT)	20" (ELPT)
	25" (EXLPT)	25" (EXLPT)	25" (EXLPT)	25" (EXLPT)		
	30" (EXXLPT)	30" (EXXLPT)	30" (EXXLPT)	30" (EXXLPT)	25" (EXLPT)	25" (EXLPT)
Counter-rotation	Available	Available	Available	Available	Available	Available on 25" (CXL) models
Trim/tilt system ³						
>Maximum tilt range	74° [-6° to 67°]	74° [-6° to 67°]	74° [-6° to 67°]	74° [-6° to 67°]	73° [-6° to 67°]	73° [-6° to 67°]
>Maximum trim range	21° [-6° to 14°]	21° [-6° to 14°]	21° [-6° to 14°]	21° [-6° to 14°]	20° [-6° to 14°]	22° [-6° to 14°]
Steering system	Electro Hydraulic power steering Joystick Piloting for Outboards AMS (Advanced Midsection)	Dual Cable Mechanical, Hydraulic EHPS ⁵ - Big Tiller ^{6 or 7}	Dual Cable Mechanical, Hydraulic EHPS ⁵ - Big Tiller ^{6 or 7}	Dual Cable Mechanical, Hydraulic EHPS ⁵ - Big Tiller ^{6 or 7}	Dual Cable Mechanical, Hydraulic EHPS ⁵ - Big Tiller ^{6 or 7}	Dual Cable Mechanical, Hydraulic EHPS ⁵ - Big Tiller ⁶
Dry weight (kg) ³ Lightest Available	272	239	239	239	220	206

¹ Computer controlled multi-port electronic fuel injection

² Optional 10W-30 for cold conditions

³ As measured on a 13° transom

⁴ Dry weight refers to base engine without liquids, battery cables, throttle/shift cables, bolt-on steering components, mounting hardware, or propeller/hub kits.

⁵ EHPS: Electro-hydraulic power steering optional

⁶ Big Tiller optional

⁷ Big Tiller models available

115-15 hp Fourstroke SeaPro product specifications

Specifications	115 hp	90 hp	75 hp	60 hp	40 hp	15 hp
Propshaft Rated Power (hp/kW)	115/86	90/67	75/56	60/45	40/30	15/11.1
Max RPM at full throttle	5000-5500	5000-5500	5000-5500	5000-5500	4500-5500	5500
Cylinders/engine configuration	In-Line 4, 8-valve single overhead cam (SOHC)	In-Line 4, 8-valve single overhead cam (SOHC)	In-Line 4, 8-valve single overhead cam (SOHC)	In-Line 4, 8-valve single overhead cam (SOHC)	In-Line 4, 8-valve single overhead cam (SOHC)	In-Line 2
Displacement (litres)	2.1	2.1	2.1	0.995	0.995	0.333
Bore & Stroke (Inch. / mm)	3.5 x 3.2 / 90 x 81	3.5 x 3.2 / 90 x 81	3.5 x 3.2 / 90 x 81	2.56 x 2.95 / 65 x 75	2.56 x 2.95 / 65 x 75	2.4 x 2.24 / 61 x 57
Induction system	Performance-tuned scroll intake manifold	Performance-tuned scroll intake manifold	Performance-tuned scroll intake manifold	Performance-tuned intake manifold	Performance-tuned intake manifold	Electronic Fuel Injection
Fuel system	EFI ¹	EFI ¹	EFI ¹	EFI ¹	EFI ¹	EFI ¹
Fuel requirements	90 RON 10% ethanol maximum	90 RON 10% ethanol maximum	90 RON 10% ethanol maximum	90 RON 10% ethanol maximum	90 RON 10% ethanol maximum	90 RON 10% ethanol maximum
Ignition system	SmartCraft ECM digital inductive	SmartCraft ECM digital inductive	SmartCraft ECM digital inductive	SmartCraft ECM digital inductive	SmartCraft ECM digital inductive	CDI with electronic spark advance
Charging system	35A (441 Watt) stator w/water-cooled voltage regulators	35A (441 Watt) stator w/water-cooled voltage regulators	35A (441 Watt) stator w/water-cooled voltage regulators	18A (226 Watt) stator w/water-cooled voltage regulators	18A (226 Watt) stator w/water-cooled voltage regulators	12-amp (145 Watt)
Starting	Electric (turn-key) with SmartStart	Electric (turn-key) with SmartStart	Electric (turn-key) with SmartStart	Electric (turn-key) with SmartStart	Electric (turn-key)	Manual
Exhaust system	Through prop	Through prop	Through prop	Through prop	Through prop	Through prop
Cooling system	Water cooled with thermostat	Water cooled with thermostat	Water cooled with thermostat	Water cooled with thermostat	Water cooled with thermostat	Water cooled with thermostat
Lubrication system	Integrated dry sump	Integrated dry sump	Integrated dry sump	Integrated dry sump	Integrated dry sump	Integrated dry sump
Oil requirement	NMMA Certified FCW SAE 25W-40	NMMA Certified FCW SAE 25W-40	NMMA Certified FCW SAE 25W-40	NMMA Certified FCW SAE 25W-40	NMMA Certified FCW SAE 25W-40	NMMA Certified FCW SAE 10W-30
Oil capacity (litres)	5.2	5.2	5.2	2.8	2.8	1.5
Engine management system	SmartCraft ECM	SmartCraft ECM	SmartCraft ECM	SmartCraft ECM	SmartCraft ECM	Digital CDI
Engine control system	Standard Mechanical Throttle & Shift	Standard Mechanical Throttle & Shift	Standard Mechanical Throttle & Shift	Standard Mechanical Throttle & Shift	Standard Mechanical Throttle & Shift	Manual Tiller or optional Remote
Engine protection system	SmartCraft Engine Guardian	SmartCraft Engine Guardian	SmartCraft Engine Guardian	SmartCraft Engine Guardian	SmartCraft Engine Guardian	Low oil pressure - Over Rev - Overheat - Sensor failure
Gear shift	F-N-R	F-N-R	F-N-R	F-N-R	F-N-R	F-N-R
Gear ratio	2.38:1	2.38:1	2.38:1	2.33:1	2.33:1	2.15:1
Driveshaft lengths	20" (ELPT) 25" (EXLPT, ECXLPT)	20" (ELPT) 25" (EXLPT) (XL)	20" (ELPT)	20" (L) 22.5" (LL) 25" (XL)	20" (L) 22.5" (LL) 25" (XL)	15" (MH) 20" (MLH)
Counter-rotation	Available on 25" (CXL) models	Not available	Not available	Not available	Not available	Not available
Trim/tilt system ²						
>Maximum tilt range	70° [-6° to 64°]	70° [-6° to 64°]	70° [-6° to 64°]	70° [-6° to 64°]	70° [-6° to 64°]	6 positions
>Maximum trim range	22° [-6° to 16°]	22° [-6° to 16°]	22° [-6° to 16°]	22° [-6° to 16°]	22° [-6° to 16°]	6 positions
Steering system	Dual Cable Mechanical, Hydraulic EHPS ⁴ - Big Tiller ⁵	Dual Cable Mechanical, Hydraulic EHPS ⁴ - Big Tiller ^{5 or 6}	Dual Cable Mechanical, Hydraulic EHPS ⁴ - Big Tiller ^{5 or 6}	Mechanical or Hydraulic	Mechanical or Hydraulic	Tiller
Dry weight (kg) ³ Lightest Available	165	165	165	118	118	45

¹ Computer controlled multi-port electronic fuel injection

² Optional 10W-30 for cold conditions

³ As measured on a 13° transom

⁴ Dry weight refers to base engine without liquids, battery cables, throttle/shift cables, bolt-on steering components, mounting hardware, or propeller/hub kits.

⁵ EHPS: Electro-hydraulic power steering optional

⁶ Big Tiller optional

⁷ Big Tiller models available



© 2019 Brunswick Marine in EMEA. All Rights Reserved. Part #: 9M0101825

Brunswick Marine in EMEA continuously explores means to improve the products it designs, manufactures and distributes. Every effort is made to produce sales and service literature which is current. Changes to specifications of engines, boats and accessories are ongoing.

This brochure should not be regarded as a precise guide to the latest specifications. This brochure is also not an offer for sales of any particular engine, boat or accessory. Distributors and dealers are not agents of Brunswick Marine in EMEA or one of its affiliates and they have no authority to bind Brunswick Marine in EMEA by any express undertaking or representation, including but not limited to representations of product, sales, applications or service nature.

Not all products are available in all countries and some are available only in limited quantities. Some products shown in this catalogue are equipped with optional accessories. Please see your local dealer.



The quality system of
Brunswick Marine in EMEA
is ISO 9001 certified